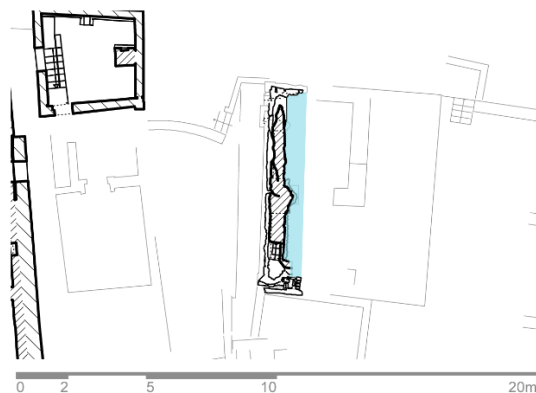


Tomb no. GB 21 (Gabra no. M 11/SS)



Description of the interior design

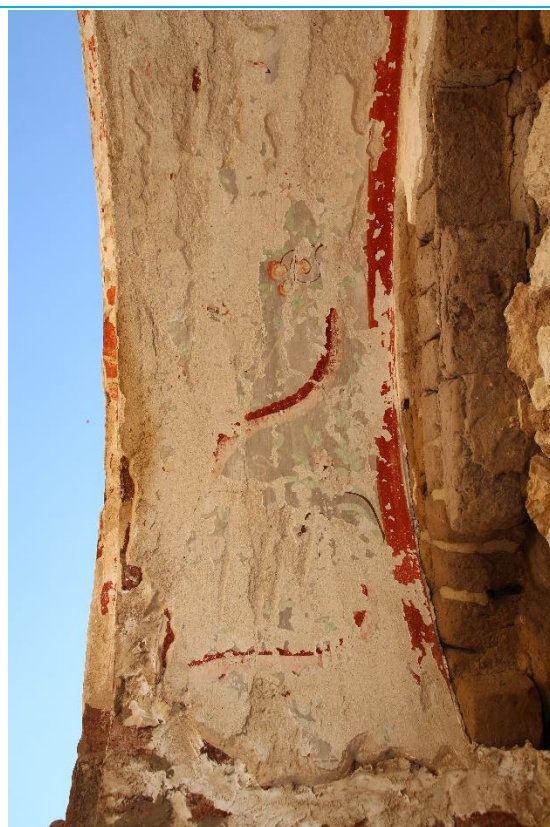
From the tomb house GB 21 merely a masonry fragment of the eastern wall is preserved. It's lower half is covered by desert sand. The eastern front side is structured by two arches built by adobe and fired bricks. The brick support is coated with two layers of lime plaster. A whitewash on the top plaster layer serves as base for wall paintings. Fragments of red colour and facile floral paintings have been preserved. The western backside is done as an ashlar stone masonry.

Condition before treatment

The wall fragment is half buried in the sand. Where visible, the adobe masonry shows a structurally destabilised and sanding surface. The deterioration had reduced the joint mortars. The plaster layers are detached from the adobe masonry. A lot of fragments can be found in the sand. The paint layers are heavily reduced.

An intervention is necessary to halt deterioration and preserve the original plaster and wall painting.

Tomb no. GB 21 (Gabra no. M 11/SS)



Treatment

The following steps of emergency measures were done in the field school of 2012 and 2014.

The architectural surface was dry cleaned by using soft brushes. The fallen-off plaster fragments were secured and stored separately. The main goal was to stabilize the paint layer supporting plasters. The structural consolidation of the adobe masonry surface provided a solid structure for the treatments to follow. In addition, lost joints were infilled. The plaster layers were stabilized by edging detached fragments with conservation mortar. All conservation mortars contain cellulose-ether as binder and was finally structurally strengthened with a silica binder. To improve the bondage between coat and support, voids were filled by grout injections based on a silica binder. Fragile paint layer fragments were structurally consolidated and re-stabilized.

To learn about details of all conservation steps and materials please refer to the link “treatment” to be found on the front page introduction.

Condition after treatment

Emergency measures have been carried out to prevent further decay. The wall fragment is exposed to the elements and human action. In this respect, it would be desirable to establish a maintenance and monitoring programme for the future.

Tomb no. GB 21 (Gabra no. M 11/SS)



Status: October 2018