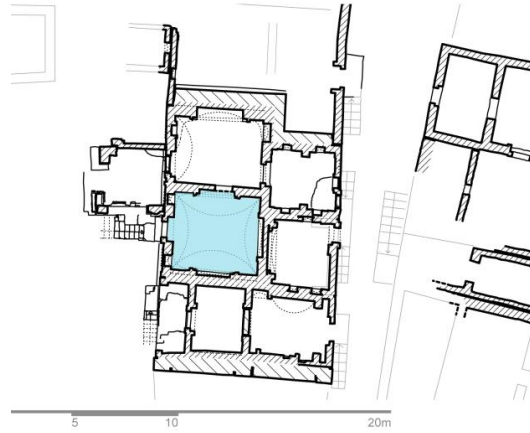


## Tomb no. GB 25 (Gabra no. M 09a/SE) inside



### Description of the interior design

A one room tomb house on the second floor, which today is today connected with the neighbour tomb houses. The decoration is dominated by two large arched niches located opposite one another on the northern and the southern walls. These niches are framed with a garland of leaves and loops and the base decorated with stone imitations.

Inside the adobe masonry is overall coated with one layer of lime plaster. In areas of painted decoration a second thin layer was plastered. The polychrome paintings were carried out directly on the smooth plaster surface. In the upper monochrome white areas a whitewash was applied.

The lost areas of the original plaster in the upper part of the walls have been closed parallel to the reconstruction of the roof. The roof was reconstructed flat, not as a dome.

## Tomb no. GB 25 (Gabra no. M 09a/SE) inside

<b>Condition before treatment</b>	
<p>The architectural surface is lined with cracks. Additionally the plaster layers are detached from the adobe masonry, being endangered to falling off. Small parts of the painted plaster are lost.</p> <p>The paint layers are reduced, but the remaining colours are stable. There is a layer of dust on the whole structure.</p> <p>An intervention is necessary to halt active deterioration and preserve the original plaster and wall painting.</p>	
<b>Treatment</b>	
<p>The following steps of emergency measures were done in the field schools of 2014. The surfaces of the large niche in the southern wall were cleaned. Fragile edges of the plaster layers were structurally consolidated. For temporary protection fragile parts of the wall painting were faced with Japanese paper.</p> <p>The work had to be interrupted because the floor of this room is not safely accessible.</p>	
<b>Condition after treatment</b>	
<p>Fragile parts of the wall painting were faced with Japanese paper and cellulose-ether glue. Further treatment is essential to guarantee long-term conservation.</p> <p>In June 2018 plaster layers in the northern-eastern corner were damaged. The broken edges of these damaged parts in the white plaster could be secured directly in October 2018. On the long term it would be desirable to continue the emergency measures and to establish maintenance and monitoring programme for the future.</p>	
<b>Status: October 2018</b>	