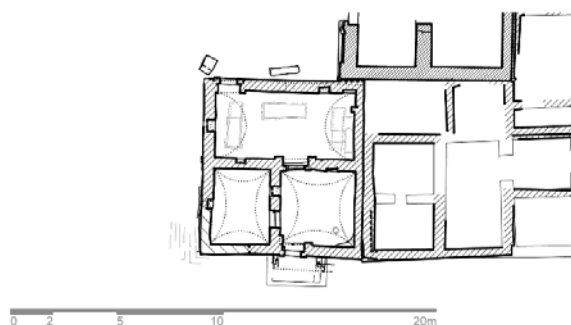
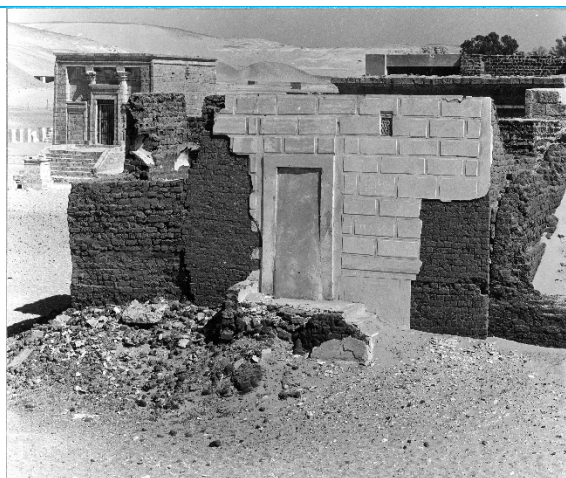


GB 42 (M 18/CP)



Date of construction	Early Roman period
Names of the deceased	Unknown
Construction material	Mudbrick; doors and windows of local shell limestone
Number of burials	At least 3 in pits in the floor of northern room (mummies still in situ)
Number of floors	1
Number of rooms	3
Number of niches	Southern rooms: each 1 in the western wall; northern room: 3
Decoration	Exterior: Imitation of isodomic masonry in stucco.

GB 42 (M 18/CP)

	Interior: northern room: on the northern wall Egyptian wall paintings of Osiris and Nephthys (left), opposite of them Isis (right) (today Mellawi Mus. 147)
Inscriptions	Hieroglyphic inscription of Osiris: “Words to say by Osiris, the lord of the dd-eternity, (and) of the holy nhh-eternity” Hieroglyphic inscription of Nephthys: “Words to say by Nephthys ...” Hieroglyphic inscription of Isis: “Words to say by Isis, the lady of...”
Bibliography	P. Perdrizet, in: Gabra et al. 1941, 100-101 pl. XLVII Gabra – Drioton 1954, pl. 13

Author: K. Lembke