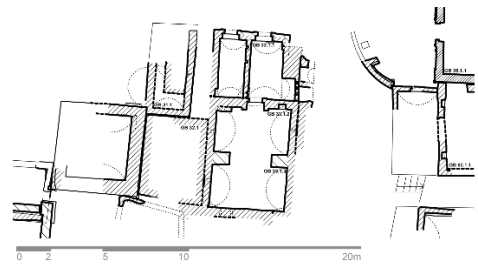
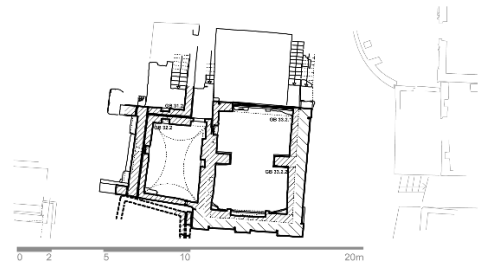


# GB 33 (M 20/SE)



1st floor



2nd floor



<p><b>Date of construction</b></p>	<p>1<sup>st</sup> floor: 1<sup>st</sup> century AD?, 2<sup>nd</sup> floor: 2<sup>nd</sup> century AD?</p>
<p><b>Names of the deceased</b></p>	<p>Unknown (1<sup>st</sup> floor: at least 2, 2<sup>nd</sup> floor: at least 1)</p>
<p><b>Construction material</b></p>	<p>Mudbrick</p>
<p><b>Number of burials</b></p>	<p>Unknown (2<sup>nd</sup> floor: main burial place in an alcove)</p>
<p><b>Number of floors</b></p>	<p>2</p>

## GB 33 (M 20/SE)

<b>Number of rooms</b>	1 <sup>st</sup> floor: 2 plus 2 later annex rooms at the front; 2 <sup>nd</sup> floor: 2
<b>Number of niches</b>	1 <sup>st</sup> floor: 1 (1 <sup>st</sup> room); 2 <sup>nd</sup> floor: 1 (1 <sup>st</sup> room)
<b>Decoration</b>	Annex NW: Wine branches with a garland, a man coupling with a woman and two cocks with a garland; annex NE: garlands, ornamental decoration, graffiti; 1 <sup>st</sup> floor: four sons of Horus, animals, funeral bed with Isis, funeral bed with Anubis, falcon, weighing of the soul; 2 <sup>nd</sup> floor: orthostates with imitation of precious stone slabs, in the alcove painted imitation of a curtain with a gorgoneion.
<b>Inscriptions</b>	None
<b>Bibliography</b>	P. Perdrizet, in: Gabra et al. 1941, 102-103