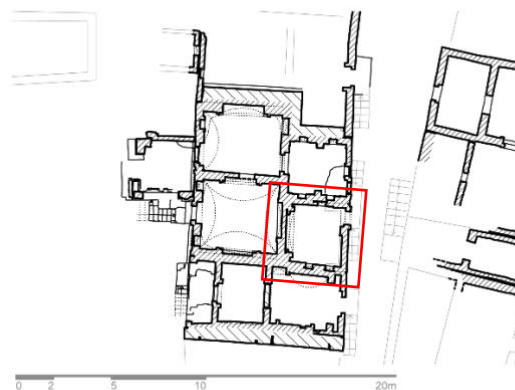


GB 26 (M 9d/SE)



<p>Date of construction</p>	<p>Last building of a group of four connected tombs (GB 24–27) 2nd floor: 3rd century AD</p>
<p>Name of the deceased</p>	<p>Unknown</p>
<p>Construction material</p>	<p>Mudbrick</p>
<p>Number of burials</p>	<p>1?</p>
<p>Number of floors</p>	<p>2 (1st floor not excavated)</p>
<p>Number of rooms</p>	<p>1 (2nd floor)</p>

GB 26 (M 9d/SE)

Number of niches	1 in the north wall, 2 in the south wall, 1 alcove in the west wall
Decoration	Painted imitation of alabaster slabs bordered and structured by black lines and fields (bottom), imitations of grey marble, red porphyry, and <i>opus sectile</i> bordered by a kyma (above); floral motives (trees) (top); niches: imitation of alabaster and porphyry
Inscriptions	None
Bibliography	Unpublished

Author: K. Lembke